

PROJECT PORTFOLIO

MACON CONSTRUCTION



MACON CONSTRUCTION

About Us

Founded in 1988, Macon Construction is a professional general contractor offering a wide range of construction services. From the inception of each project, we work as a team to bring projects to completion on time and within budget, with an unrelenting commitment to quality and detail. Each project is met with the same client-oriented approach; from Administrative Staff to Project Managers, Superintendents and Customer Service Representatives.

Macon has assembled a professional staff who average more than 25 years of experience in the construction industry enabling us to manage the entire construction process with confidence taking full responsibility for superior results. From preliminary review of client goals and needs, through project close-out, we are committed to maintaining our reputation as one of the Chicago area's most respected construction firms. Our focus is on exceeding client expectations and guaranteeing customer satisfaction.



Our Services

Our services fall into three basic categories:

Pre-Construction:



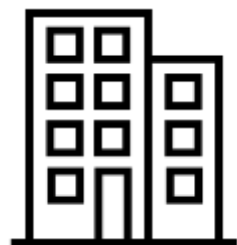
Conceptual + Budgetary Estimating, Design Review, Evaluation + Value Analysis, Constructability Reviews, Value Engineering Reviews, Coordinating Consultants for Permit Drawings, Expediting of Building Permits.

Construction:



Project Management, Construction Scheduling (CPM), Bid Management, Contract Administration, Cost Estimating, Subcontractor Selection, Purchasing, Quality Control, Cost Accounting, Field Supervision, Job Safety Programs.

Post-Construction:



Warranty/Guarantee Management, Project Close-Out & Punch list Confirmation, Governmental Approvals, System Maintenance, LEED Certification Documentation Support.



Our Process

Whether it's in real-time, daily, or weekly, Macon manages project reporting and documentation that keeps the entire team informed of all aspects of a project. We embrace technology by utilizing these tools to provide our clients with online access to all project details.



Procore

Documentation + Communication



Building Connected

Bid Management



Sensera Systems

Job-Site Security



Sage Contractor

Project Accounting



Holo Builder

360 Image + Video Capturing



Microsoft Project

Project Scheduling

PROJECT PORTFOLIO PART I:
MULTIFAMILY





MULTIFAMILY

Project Portfolio

Table of Contents

The Field's Lofts	6-7
The Hayden	8-9
No. 508	10-11
Norweta Row	12-13
The Ainslie	14
Patterson Green Apartments	15
2000 N Milwaukee	16
Campbell Apartments	17
Avondale East	18
2740 W Armitage	19
Active Projects	20



MULTIFAMILY

The Field's Lofts

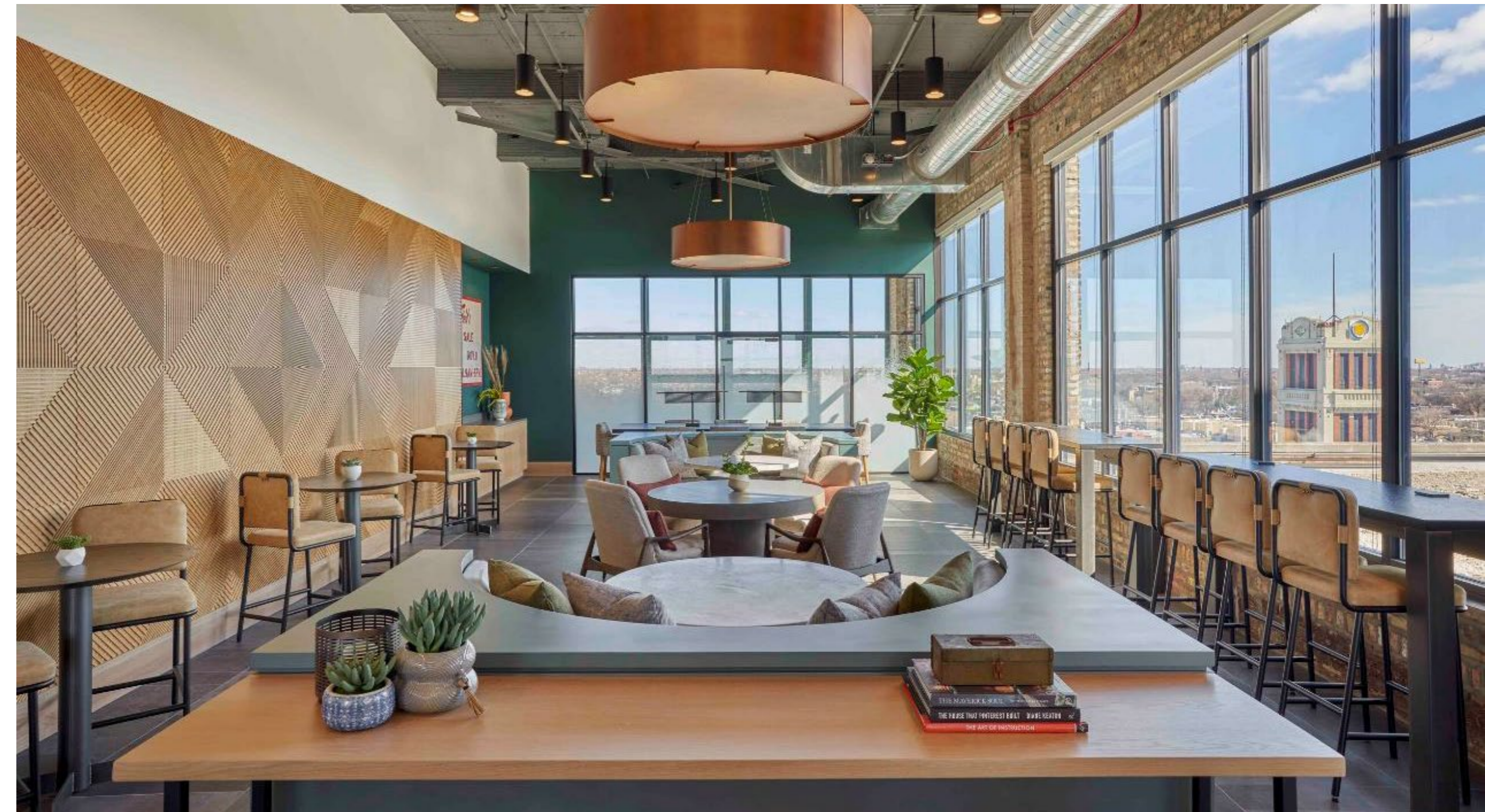
► Project Information

- Warehouse Conversion – 6-Story, 123-Unit Mixed-Use Residential
- 4000 W Diversey Ave, Chicago, IL
- Architect – Hirsch MPG

► Project Features

- All New Mechanical Systems, Stair Systems, Elevators, and Unit Buildouts.
- VRF Heating & Cooling Systems, Hardwood Flooring, Professional Grade Kitchens, and Luxury Bathrooms.
- Amenities include Roof Deck, Penthouse Amenity Space, Workout Room, Yoga Room, and Access Control Systems.
- The project is a component of the Mixed-Use Development called 'The Field's,' which is the repurposing of the Marshall Field's Warehouse, a 1.5M SF Hi-Rise warehouse facility.

► [Click here for a video of The Field's Lofts](#)





MULTIFAMILY

The Field's Lofts



MULTIFAMILY

The Hayden

► **Project Information**

- New Construction – 10-Story, 28-Unit Luxury Residential
- 1109 W Washington Blvd, Chicago
- Architect – Booth Hansen

► **Project Features**

- Private Secure Elevator Access, Freight Elevator, Indoor Heated Parking, Power Hook-ups for Electric Vehicles, Bike Storage, Dog Wash Station, Private Terraces, Quaker Window System, Home Automation Systems, Watermark Plumbing Fixtures.
- Oversized Great Room & Living Space, Folding Glass Wall Systems, Gas Fireplace with Stone Surround and Wood Mantel and Built-In Shelving, 10' Ceilings, Wide Plank Hardwood Flooring, Recessed LED Lighting, Custom Cabinetry, Natural Stone or Quartz Countertops, Subzero/Wolf Appliances.
- Walk-In Shower with Bench, Private Water Closet with Toilet, Steam Shower with Digital Controls, Hydro Systems Soaking Tub with Floor-Mounted Filler & Hand Shower, Natural Calacatta Marble Flooring and Ceramic Subway Tile Shower Walls, Heated Floors with Thermostatic Control.

- [Click here for a video tour of The Hayden](#)





MULTIFAMILY
The Hayden



MULTIFAMILY
No. 508

► **Project Information**

- New Construction – 12-Story, 53-Unit Multi-Family Residential
- 508 W Diversey Pkwy, Chicago, IL
- Architect – Pappageorge Haymes Partners

► **Project Features**

- Floor to Ceiling Windows
- Hardwood Flooring
- Designer Cabinetry
- Quartz Countertops
- Stainless Steel Appliances
- Private Balcony
- Amenities Include: Fitness Center, Outdoor Exercise Deck, Rooftop Terrace, Resident Storage, Private & Heated Indoor Parking with Electric Car Charging Stations, and a Car Wash Station, Bike Parking, Pet Concierge Service

► [Click here for a video tour of No. 508](#)





MULTIFAMILY
No. 508



MULTIFAMILY

Norweta Row

► **Project Information**

- New Construction – 3-Building, 4-Story, 76-Unit Multifamily Residential
- 2611 N Hermitage Ave, Chicago IL
- Architect – Pappageorge Haymes Partners

► **Project Features**

- Floor to Ceiling Windows
- Hardwood Flooring
- Designer Cabinetry
- Quartz Countertops
- Stainless Steel Appliances
- Private Balcony
- Amenities Include: Amenities Include: 24/7 Fitness Center, Resort-Style Pool, All-Season Solarium, Business Center, Gardens, Indoor Dog Run & Wash, Guest Suite, Concierge-Level Onsite Management

► [Click here for a video tour of Norweta Row](#)





MULTIFAMILY
Norweta Row



MULTIFAMILY

The Ainslie

► **Project Information**

- New Construction – 4-story, 54-unit mixed-use residential
- 4919 N Clark St, Chicago, IL
- Architect - Axios

► **Project Features**

- 10' Ceilings
- Thermally Efficient European Tilt & Turn Windows
- Luxury Vinyl Flooring
- Split System Heating & Cooling
- All Stainless-Steel Appliances
- Quartz Counter Tops
- Glass-Enclosed Showers
- Private Terraces
- Roof Deck & Grill Area
- Heated Indoor Parking

► [Click here for a video tour of the Ainslie](#)



MULTIFAMILY

Patterson Green Apartments

► Project Information

- New Construction – 4-Story, 18-Unit Multifamily Luxury Residential
- 1118 W Patterson Ave, Chicago IL
- Architect – Pappageorge Haymes Partners

► Project Features

- Heated Garage
- Elevator
- Trash Chute
- Floor-to-Ceiling Windows
- Private Decks
- Roof Deck with Pickleball Court and Putting Green



MULTIFAMILY

2000 N Milwaukee

► **Project Information**

- New Construction – 15-Unit, Mixed-Use Multifamily
- 2000 W Milwaukee Ave, Chicago, IL
- Architect - Hartshorne Plunkard Architecture

► **Project Features**

- Elevator
- Floor to Ceiling Windows
- Balconies
- Split System Heating & Cooling
- Hardwood Flooring
- Modern Kitchens and Bathrooms
- Granite Countertops
- Stainless Steel Appliances



MULTIFAMILY

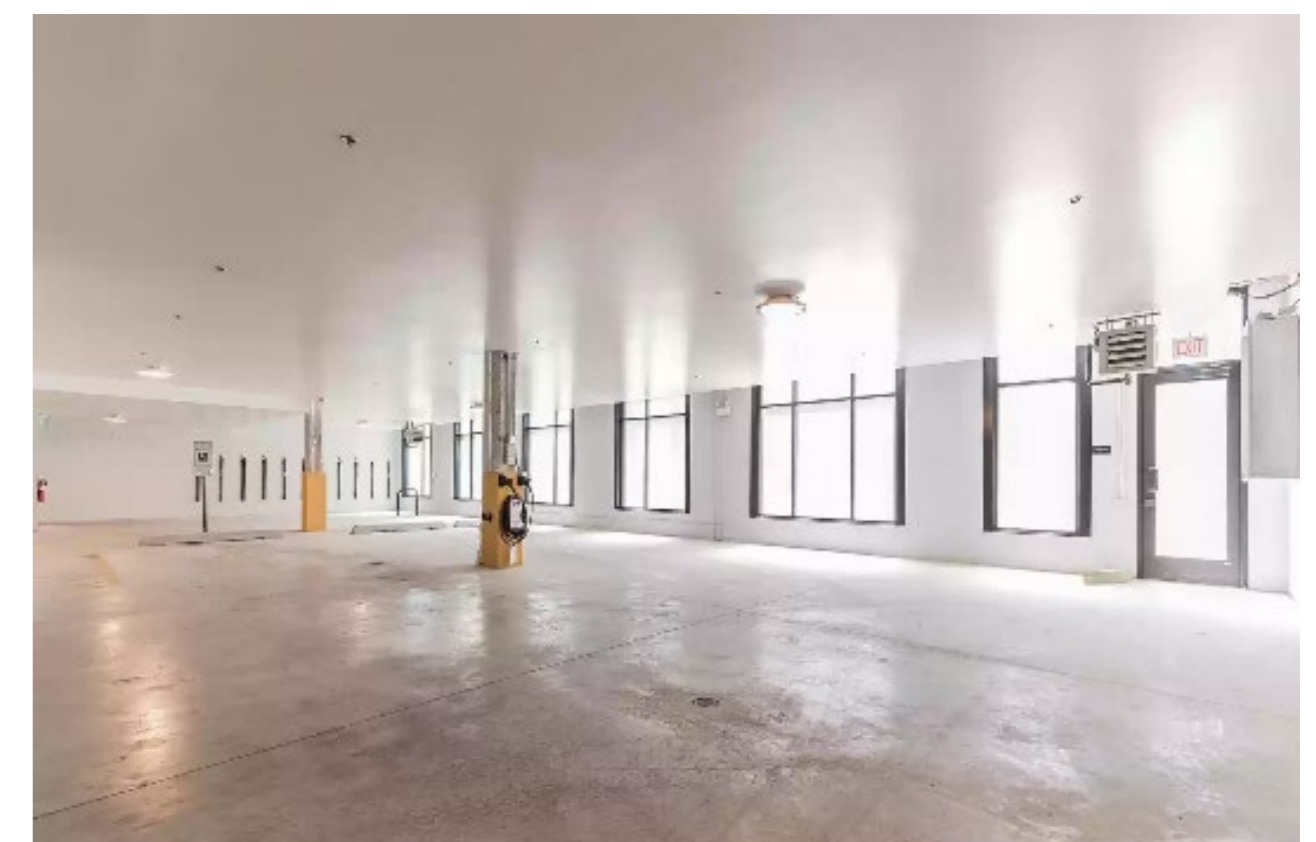
Campbell Apartments

► Project Information

- New Construction - 36,000 SF, 4-Story, Multifamily Residential
- 3604 N Campbell Ave, Chicago, IL
- Architect – Hirsch MPG

► Project Features

- Heated Garage
- Elevator
- Trash Chute
- Exercise Room
- Private Decks
- Gourmet Kitchens
- Custom Closet Built-ins
- High-Efficiency Windows and Mechanical Systems



MULTIFAMILY

Avondale East

► **Project Information**

- New Construction – 40,000 SF, 4-Story Multifamily Residential
- 2803/2806 W Henderson St, Chicago IL
- Architect – Hirsch MPG

► **Project Features**

- Elevator
- Indoor Heated Garage
- Balconies
- Bike Storage
- European Floor-to-Ceiling windows
- Custom Cabinetry and Closet Interiors
- Stainless Steel Appliances
- Concrete Subfloors
- Contemporary Kitchens and Baths



MULTIFAMILY

2740 W Armitage

► **Project Information**

- New Construction – 40,000 SF, 4-Story Multifamily Residential
- 2740 W Armitage Ave, Chicago, IL
- Architect – Hirsch MPG

► **Project Features**

- Elevator
- Indoor Heated Garage
- Balconies
- Bike Storage
- European Floor-to-Ceiling windows
- Custom Cabinetry and Closet Interiors
- Stainless Steel Appliances
- Concrete Subfloors
- Contemporary Kitchens and Baths



MULTIFAMILY

Active Projects

► **Project Information**

- 4640 N Western Ave, Chicago, IL - (Bottom Left)
- 1802 W Berenice Ave, Chicago, IL - (Top Right)
- 3605 N Ravenswood Ave, Chicago, IL - (Bottom Right)



PROJECT PORTFOLIO PART II:
COMMERCIAL / INDUSTRIAL





COMMERCIAL / INDUSTRIAL

Project Portfolio

Table of Contents

	AUTOMOTIVE		COMMERCIAL BUILDOUTS
• Tesla		23	AT&T
	EDUCATION		AutoZone
• Everbrook Academy		24	Circle K
• Kids' Work		25	Crate & Barrel
• Kids & Co.		26	Essex Realty
• North Park Elementary School		27	Infinity Dome
• Wolcott School + AAC		28	Riverview at Roscoe
	MEDICAL		Starbucks Princi Commissary Kitchen
• American Red Cross		29	The Field's
• MedSpring Urgent Care		30	Wicker Park Athletic Center
• MedVet Animal Hospital		31	
• Rise Recreational Dispensary		32	
• THC Center Dispensary		33	
	HOSPITALITY		
• Davis Theater / Carbon Arc		34	
• Lincoln Hall		35	



AUTOMOTIVE

Tesla

► Project Information

- Adaptive Reuse, Warehouse Conversions & Buildouts of Tesla Service Centers
- Multiple Locations throughout U.S.
- Architect – Chipman Design Architecture



DAYCARE / EDUCATION

Everbrook Academy

► Project Information

- 12,000 SF Daycare & Preschool Buildout
- 538 W Diversey Ave, Chicago, IL
- Architect – Greenberg Farrow



DAYCARE / EDUCATION

Kids' Work

► Project Information

- 30,000 SF Adaptive Reuse to Daycare & Preschool buildout
- 3429 N California Ave, Chicago, IL
- Architect – FC Studio

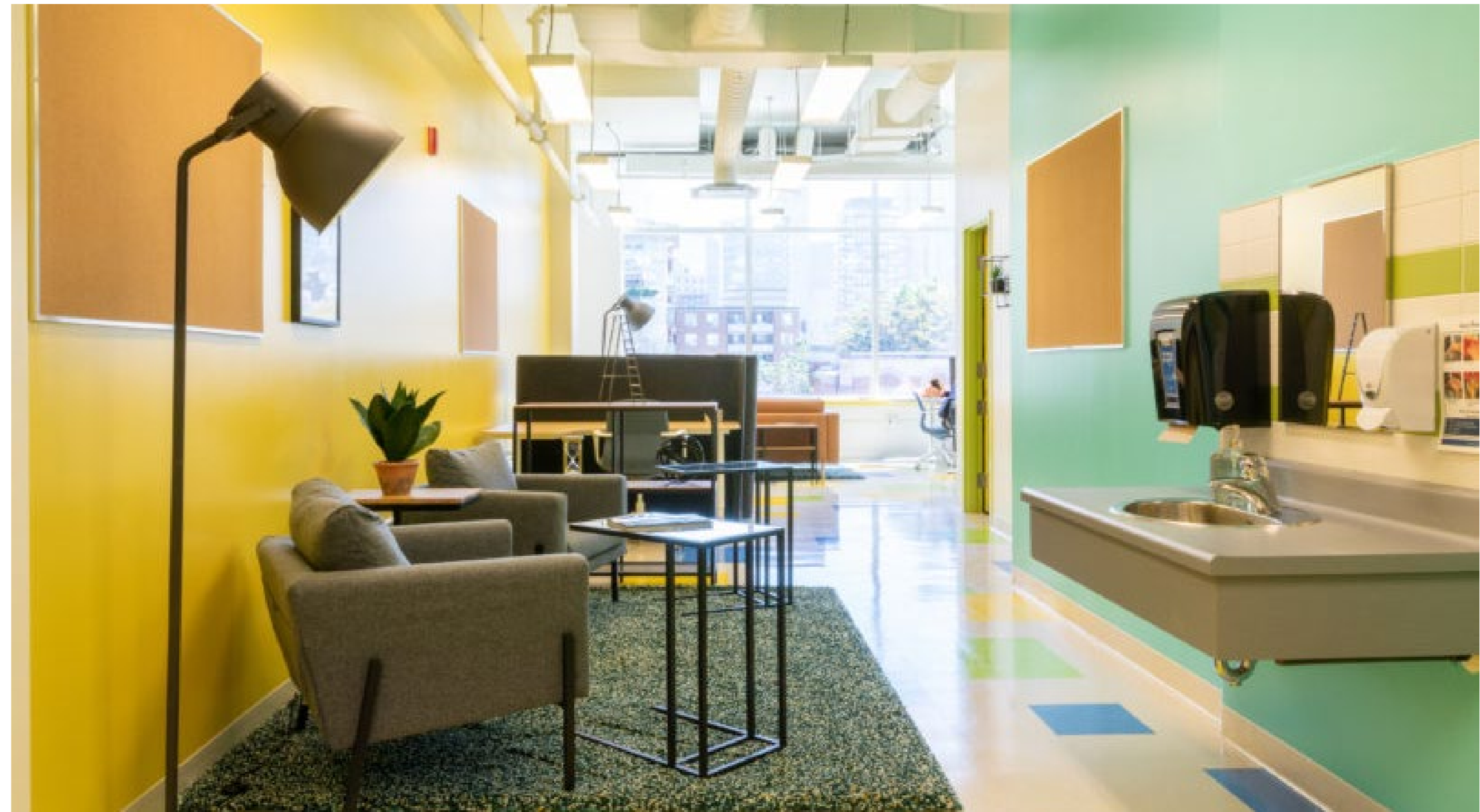


DAYCARE / EDUCATION

Kids & Co.

► Project Information

- 12,000 SF Daycare & Preschool Buildout
- Multiple Locations in the Chicagoland area
- Architect – Scott Morris

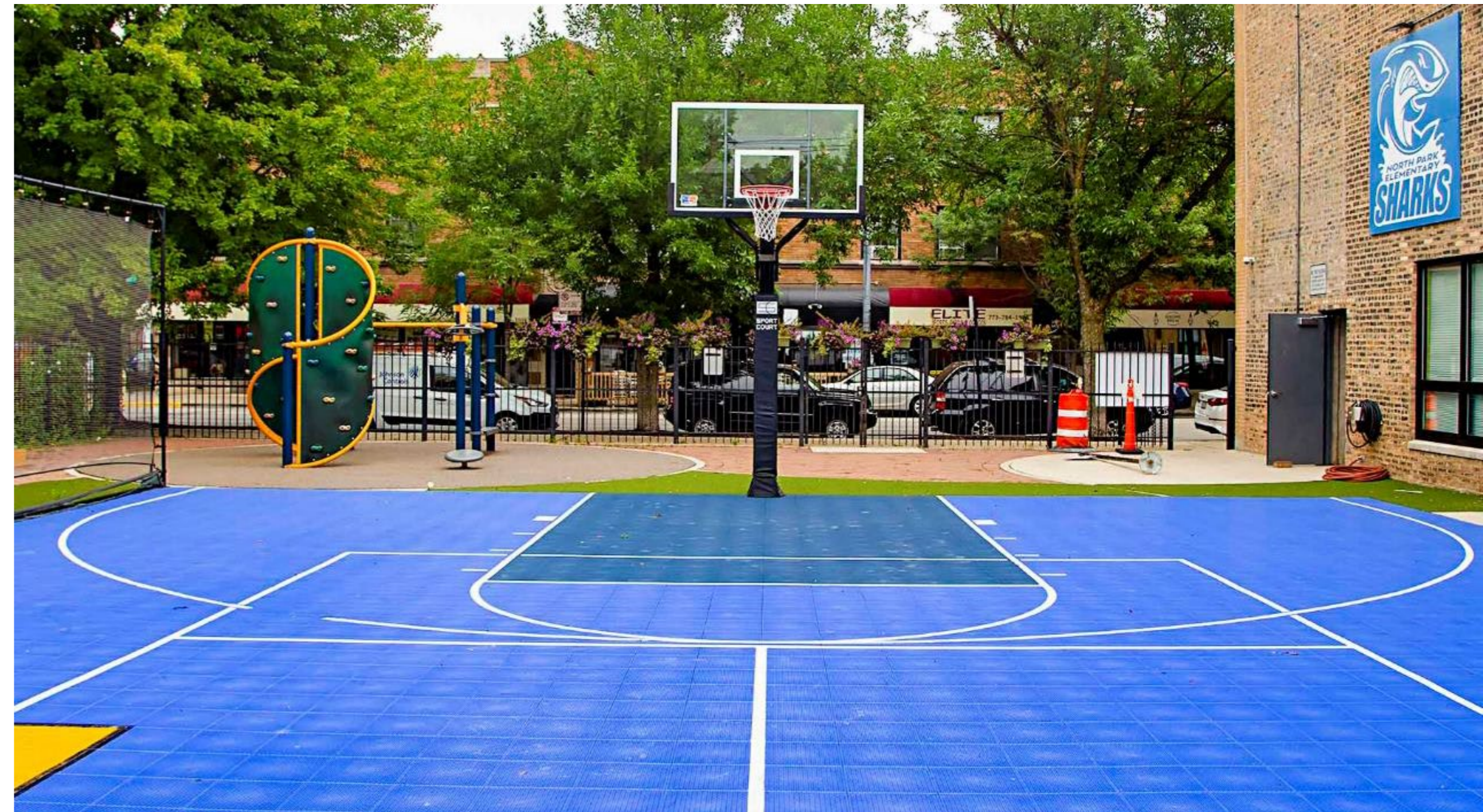


DAYCARE / EDUCATION

North Park Elementary

► Project Information

- 20,000 SF III-Phase Interior Renovation Project
- 2017 W Montrose Ave, Chicago, IL
- Architect – Johnathan Splitt Architects



DAYCARE / EDUCATION

Wolcott School + AAC

► Project Information

- 40,000 SF Warehouse Conversion to Private High School
- 25,000 SF New Construction Arts & Athletic Center
- 524 N Wolcott Ave & 1950 W Hubbard St, Chicago, IL
- Architect – Wheeler Kearns & Lothar Van Hook Destefano Architects



MEDICAL

American Red Cross

► Project Information

- 15,000 SF Blood Donation / Distribution Centers
- Multiple Locations throughout U.S.
- Architect – Live Design Group



MEDICAL

MedSpring Urgent Care

► Project Information

- 15,000 SF Urgent Care Medical Centers
- Multiple Locations throughout Chicago
- Architect – Warren Johnson Architects



MEDICAL

MedVet Animal Hospital

► **Project Information**

- 65,000 SF Warehouse Conversion to Veterinarian Hospital
- 3305 California Ave, Chicago, IL
- Architect – M+A Architects



MEDICAL

Rise Recreational Dispensary

► Project Information

- 10,000 SF Warehouse Conversion to Cannabis Dispensary
- 1325 Armour Blvd, Mundelein, IL
- Architect – Warren Johnson Architects



MEDICAL

The Herbal Care Center

► Project Information

- 15,000 SF Warehouse Conversion to Cannabis Dispensary
- 1301 S Western Ave, Chicago, IL
- Architect – Studio ARQ

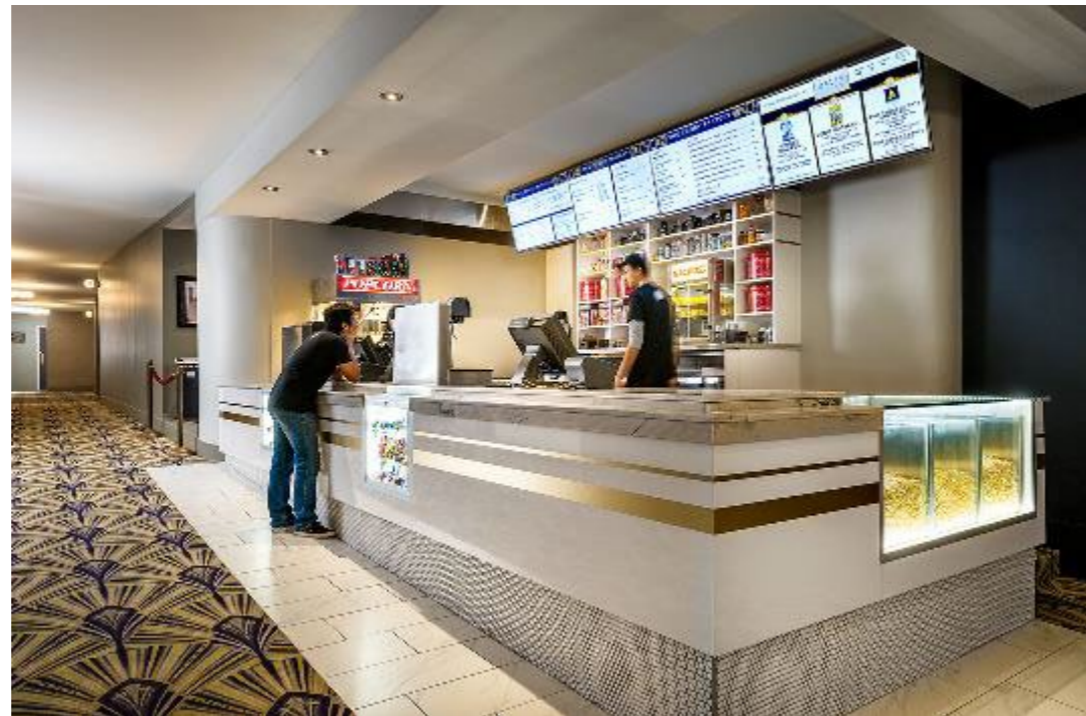


HOSPITALITY

Davis Theater / Carbon Arc

► Project Information

- 40,000 SF Historic Theater Renovation Project with Restaurant Buildout
- 4614 N Lincoln Ave, Chicago, IL
- Architect – Kennedy Mann Architects

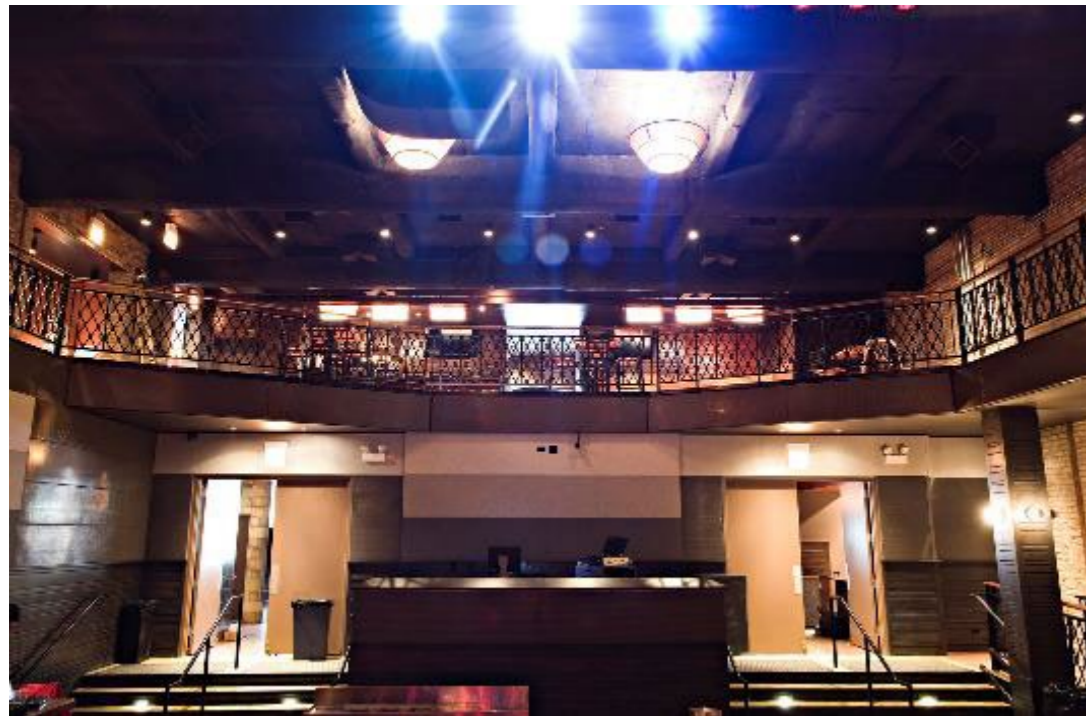


HOSPITALITY

Lincoln Hall

► **Project Information**

- 10,000 SF Performance Center Renovation with Bar and Restaurant
- 2424 N Lincoln Ave, Chicago, IL
- Architect – IPSA Corporation

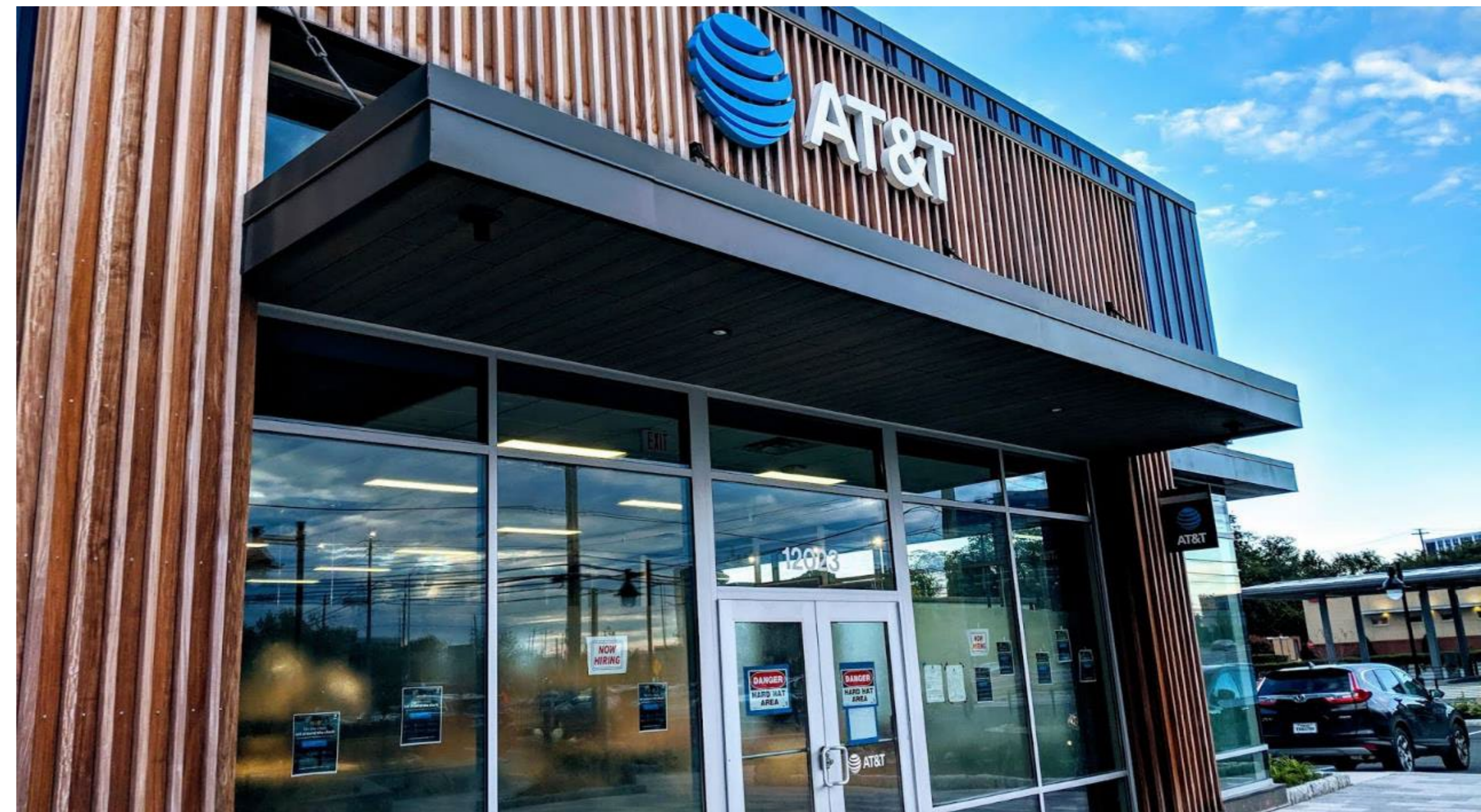


COMMERCIAL BUILDOUT

AT&T

► Project Information

- 15,000 SF Telephone Sales & Service Center Buildouts
- Multiple Locations throughout Chicago
- Architect – Oculus Inc.

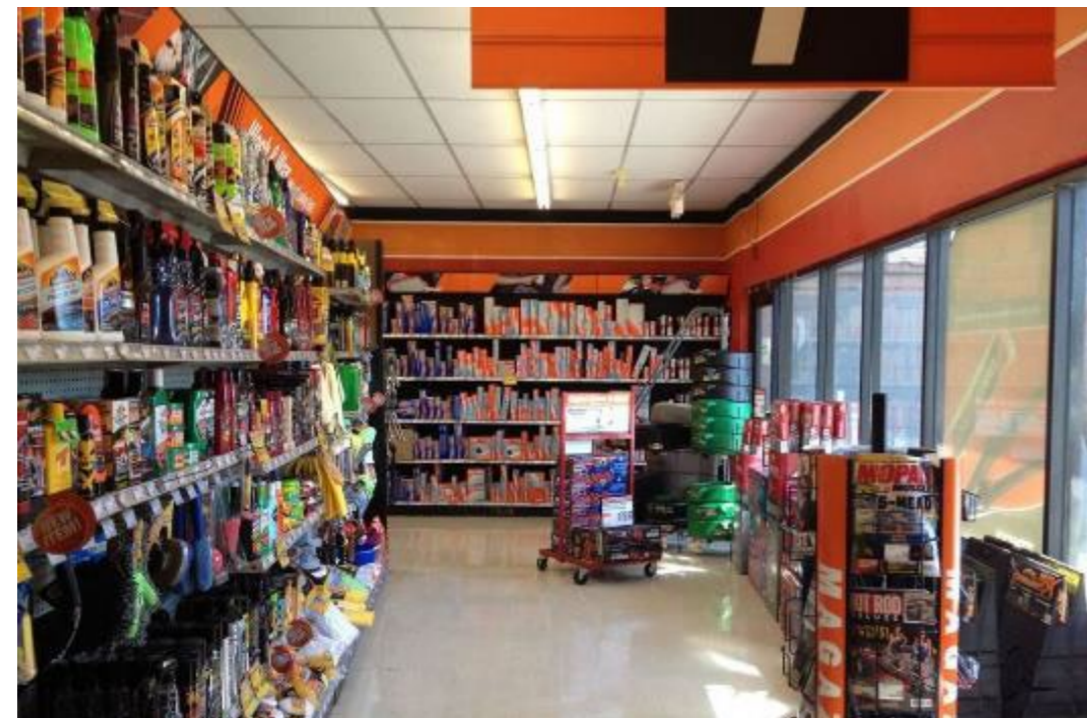


COMMERCIAL BUILDOUT

AutoZone

► Project Information

- 30,000 SF Automotive Sales & Service Center Buildouts
- Multiple Locations throughout Chicago

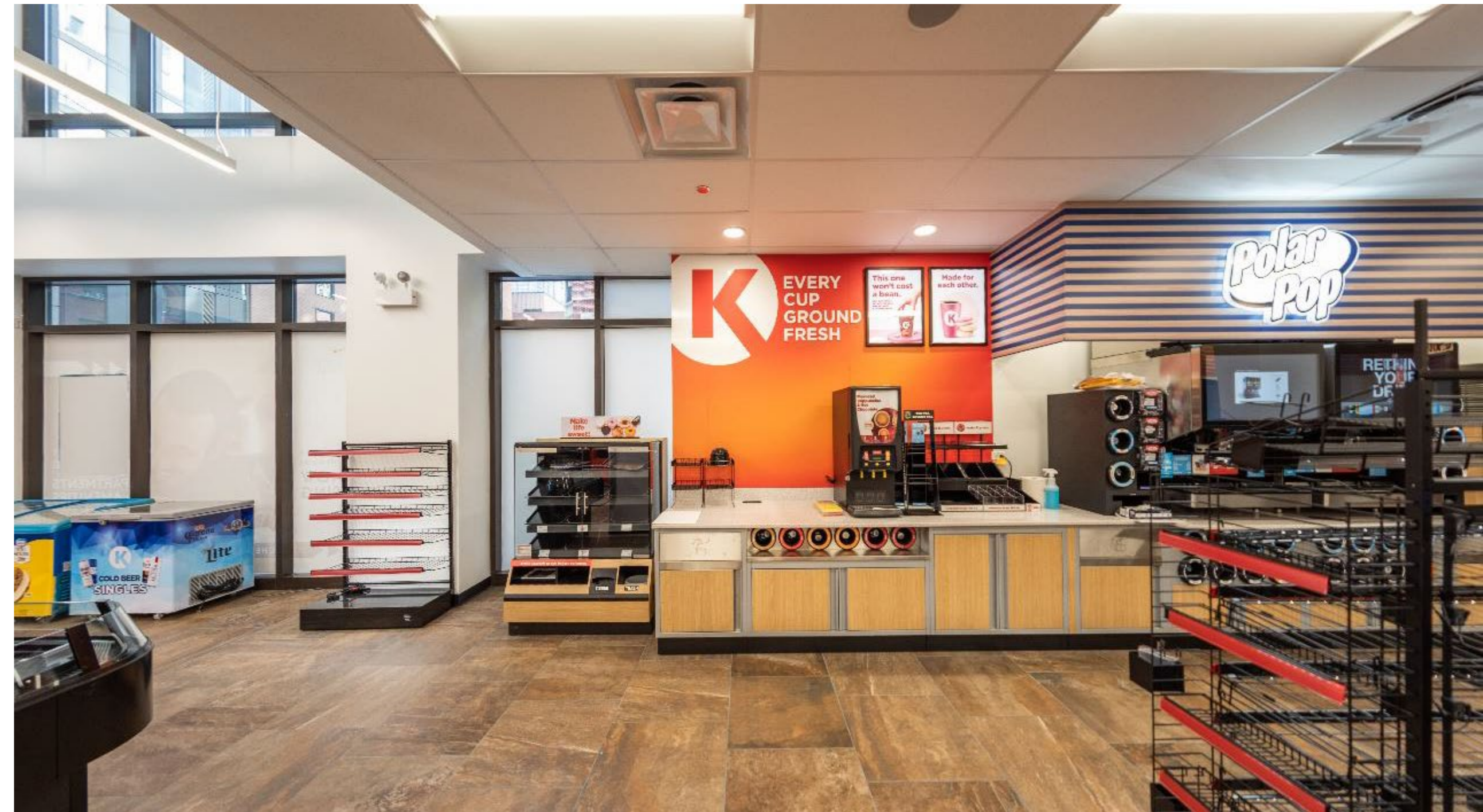


COMMERCIAL BUILDOUT

Circle K

► Project Information

- 3000 SF Adaptive Reuse and Convenience Store Buildout
- Multiple Locations throughout Chicago
- Multiple Architects

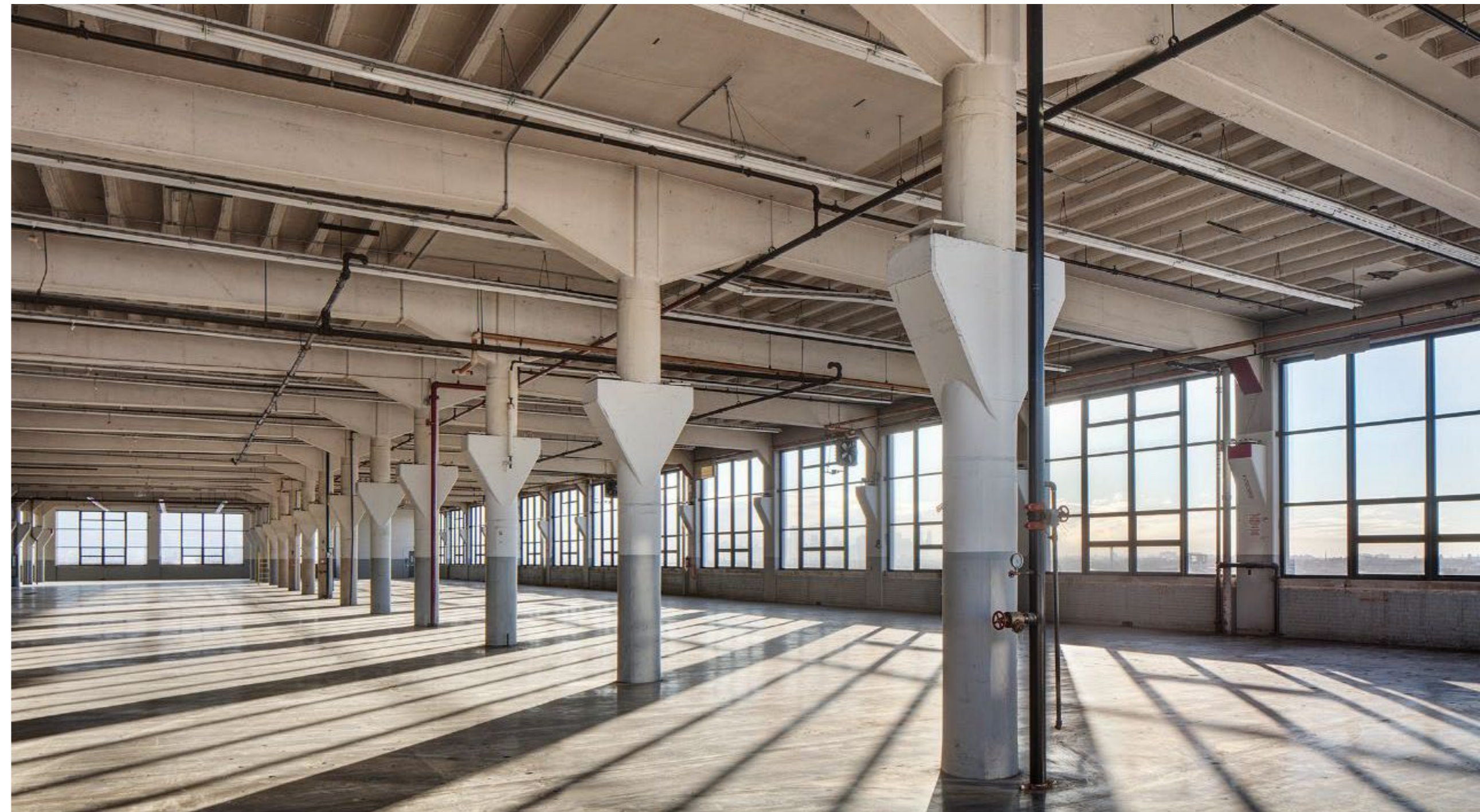


COMMERCIAL BUILDOUT

Crate & Barrel

► **Project Information**

- 120,000 SF Warehouse Conversion to Photo & Videography Studio
- 4000 W Diversey Ave, Chicago, IL
- Architect – Whitney Architects, Inc.



COMMERCIAL BUILDOUT

Essex Realty

► **Project Information**

- 8,000 SF Adaptive Reuse Buildout to Realty Office Space
- 2718 W Roscoe St, Chicago, IL
- Architect – Box Studios

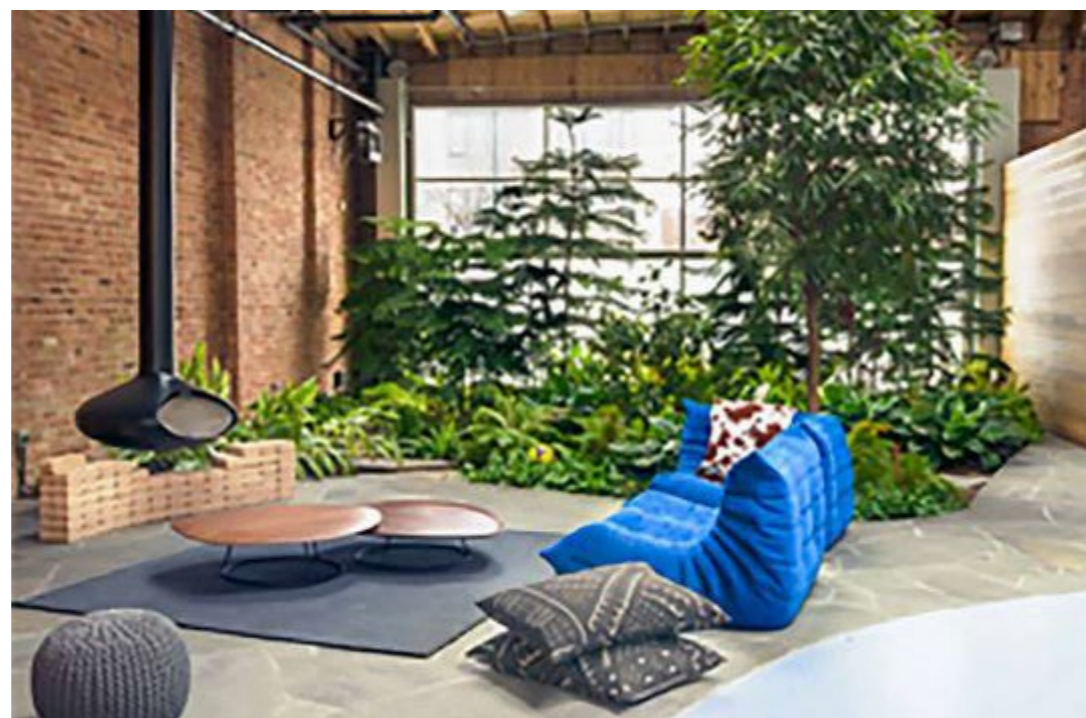
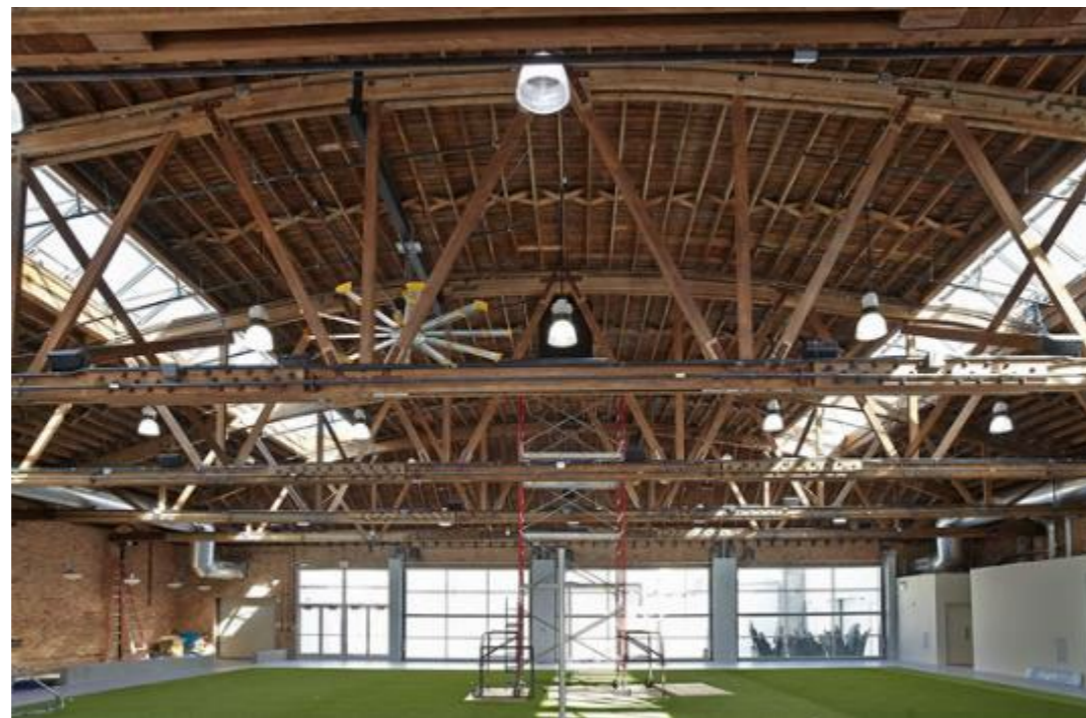
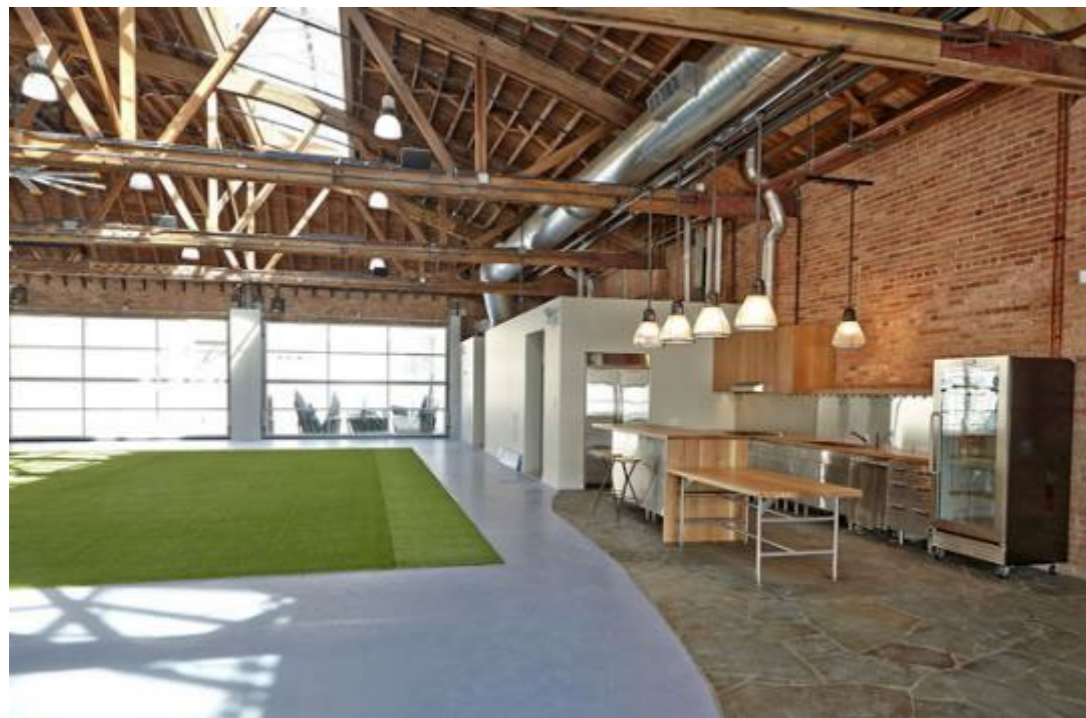


COMMERCIAL BUILDOUT

Infinity Dome

► **Project Information**

- 15,000 SF Warehouse Conversion to Event Center
- 1328 W Randolph St, Chicago, IL
- Architect – Scrafano Architects

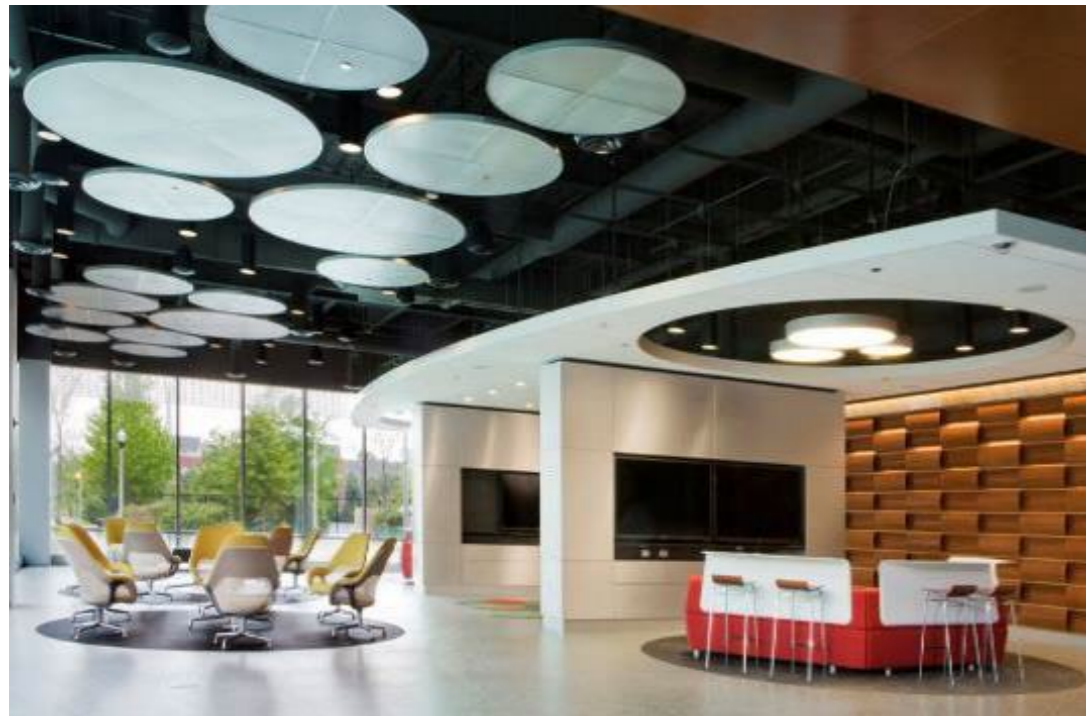


COMMERCIAL BUILDOUT

Riverview on Roscoe

► **Project Information**

- 250,000 SF Warehouse / Office Project (in progress)
- 2718 W Roscoe St, Chicago
- Architect – FC Studio



COMMERCIAL BUILDOUT

Starbucks Princi Commissary

► Project Information

- 20,000 SF Commissary Buildout
- 361 W Chestnut St, Chicago, IL
- Architect – NORR Architects

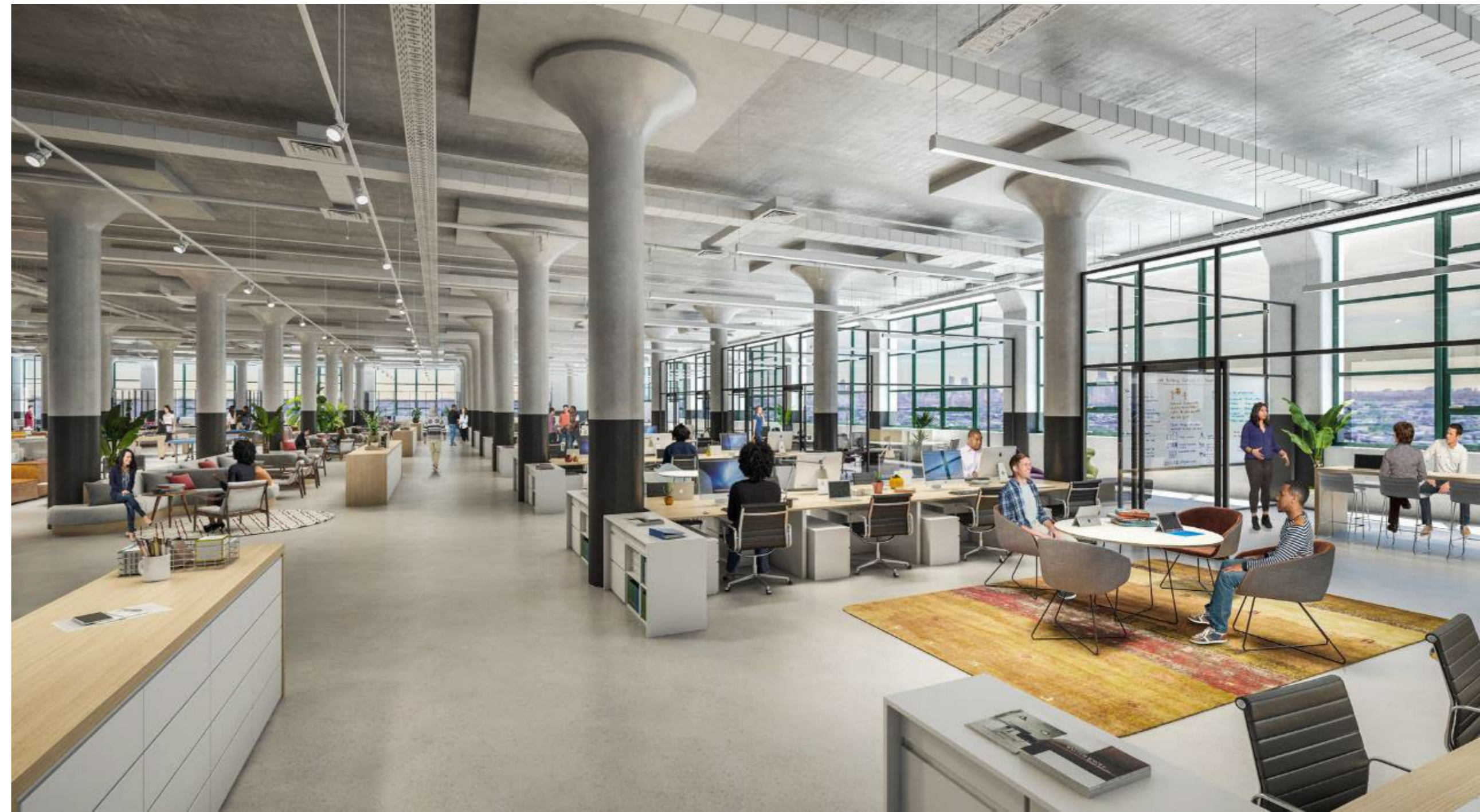
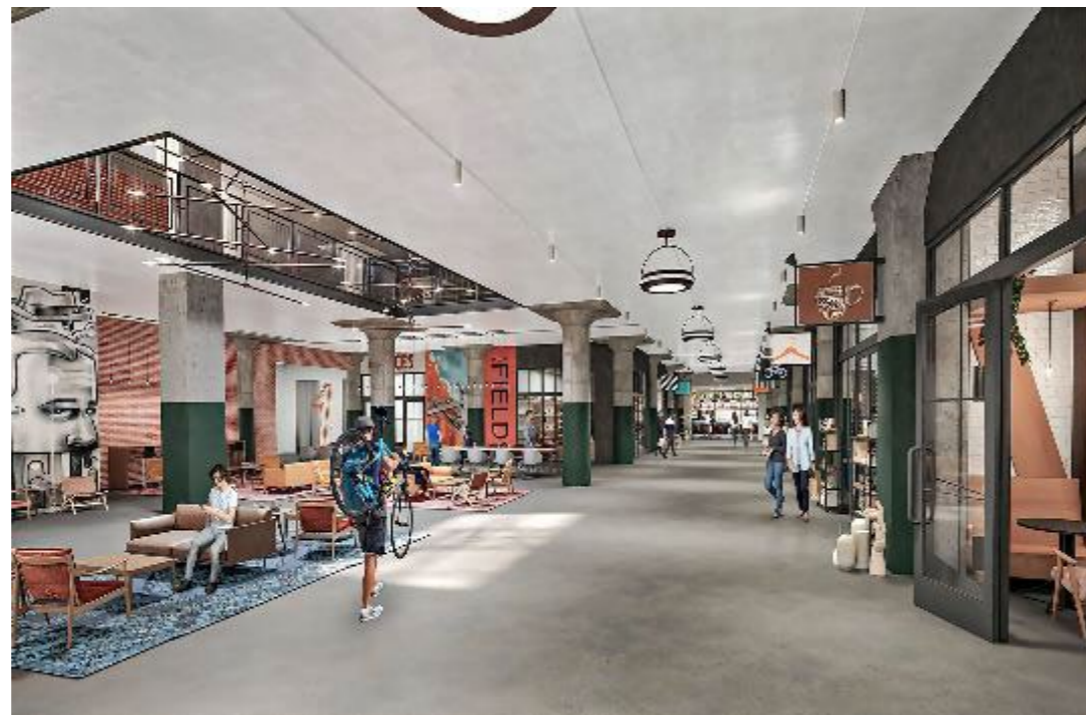


COMMERCIAL BUILDOUT

The Field's

► Project Information

- Multiple Projects, including:
 - 400,000 SF Office/Storage Facility for Studio 41;
 - 65,000 SF Grocery Store; 125,000 SF Self Storage Facility;
 - 30,000 SF TI for Deal Genius; 30,000 SF TI for Cradles to Crayons;
 - 60,000 SF TI Newlywed Foods

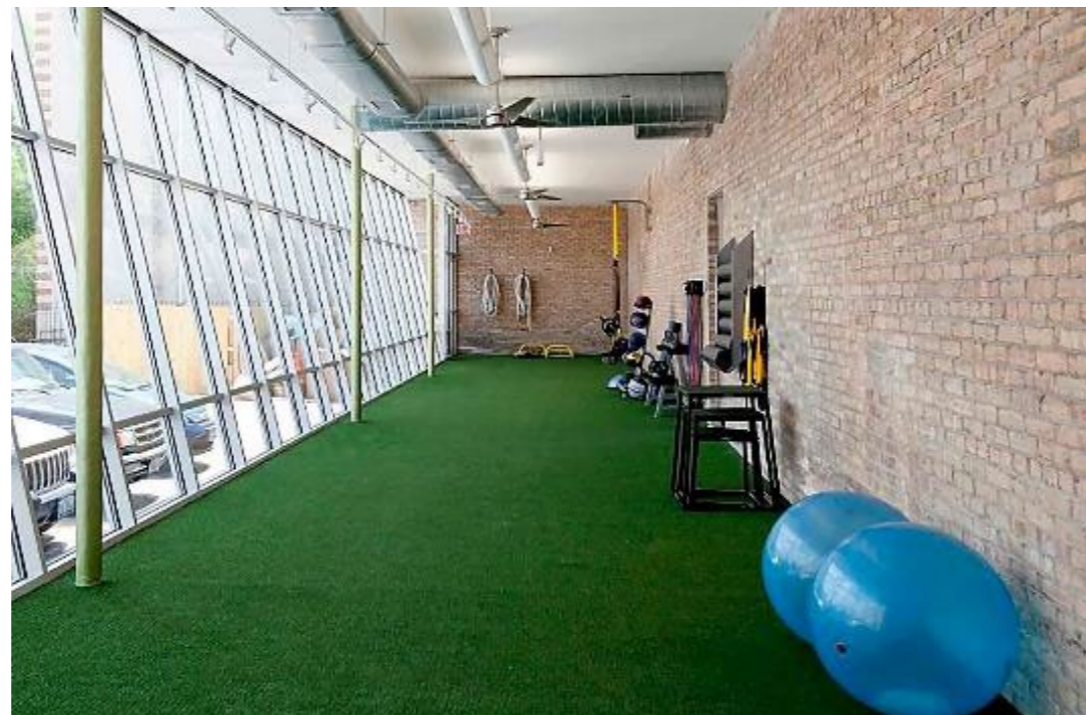


COMMERCIAL BUILDOUT

Wicker Park Athletic Club

► Project Information

- 25,000 SF Health Club
- 1635 W Division Ave, Chicago, IL
- Architect – Johnathan Splitt Architects



PROJECT PORTFOLIO PART III:
HOSPITALITY / QSR





HOSPITALITY & QSR

Project Portfolio

Table of Contents

HOSPITALITY

• Crushed by Giants	48
• Davis Theater / Carbon Arc	49
• Lincoln Hall	50
• Little Beet Table	51
• Milt's BBQ	52
• Pret a Manger	53
• Princi Cafe	54
• Tacombi	55

QUICK SERVICE RESTAURANT

• Burger King	56
• Chip City	57
• Chipotle	58
• Dunkin' Donuts	59
• Einstein Bros. Bagels	60
• Krispy Kreme	61
• McDonald's	62
• Sonic Drive-In	63
• Starbucks	64
• Wendy's	65

HOSPITALITY

Crushed by Giants

► Project Information

- Adaptive Reuse and Brewpub Buildout
- 600 N Michigan Ave, Chicago, IL
- Architect – Johnathan Splitt Architects



HOSPITALITY

Davis Theater / Carbon Arc

► Project Information

- 40,000 SF Historic Theater Renovation Project with Restaurant Buildout
- 4614 N Lincoln Ave, Chicago, IL
- Architect – Kennedy Mann Architects

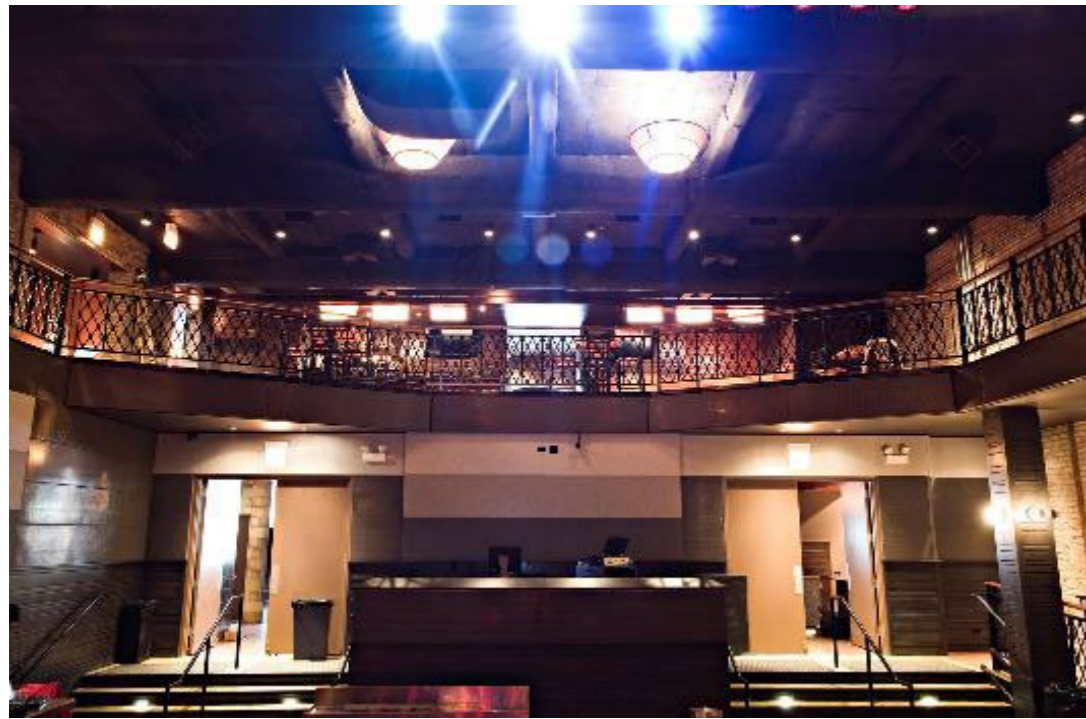


HOSPITALITY

Lincoln Hall

► **Project Information**

- 10,000 SF Performance Center Renovation with Bar and Restaurant
- 2424 N Lincoln Ave, Chicago, IL
- Architect – IPSA Corporation



HOSPITALITY

Little Beet Table

► Project Information

- Adaptive Reuse and Restaurant Buildout
- 845 N State St. Chicago, IL
- Architect – DXU Studio



HOSPITALITY

Milt's BBQ

► **Project Information**

- Tenant Buildout
- 3411 N Broadway St, Chicago, IL
- Architects - Auerbach Architects



HOSPITALITY

Pret a Manger

► Project Information

- Ground-Up New Construction and Tenant Improvement Work
- Multiple Locations throughout U.S.
- Architect – Warren Johnson Architects



HOSPITALITY

Princi Bakery

► Project Information

- Interior Tenant Improvement Work
- 1000 W Randolph, Chicago, IL
- Architects - NORR Architects



HOSPITALITY

Tacombi

► Project Information

- Adaptive Reuse and Restaurant Buildout
- Multiple Locations in the Chicagoland area
- Architect – Chipman Design Architecture

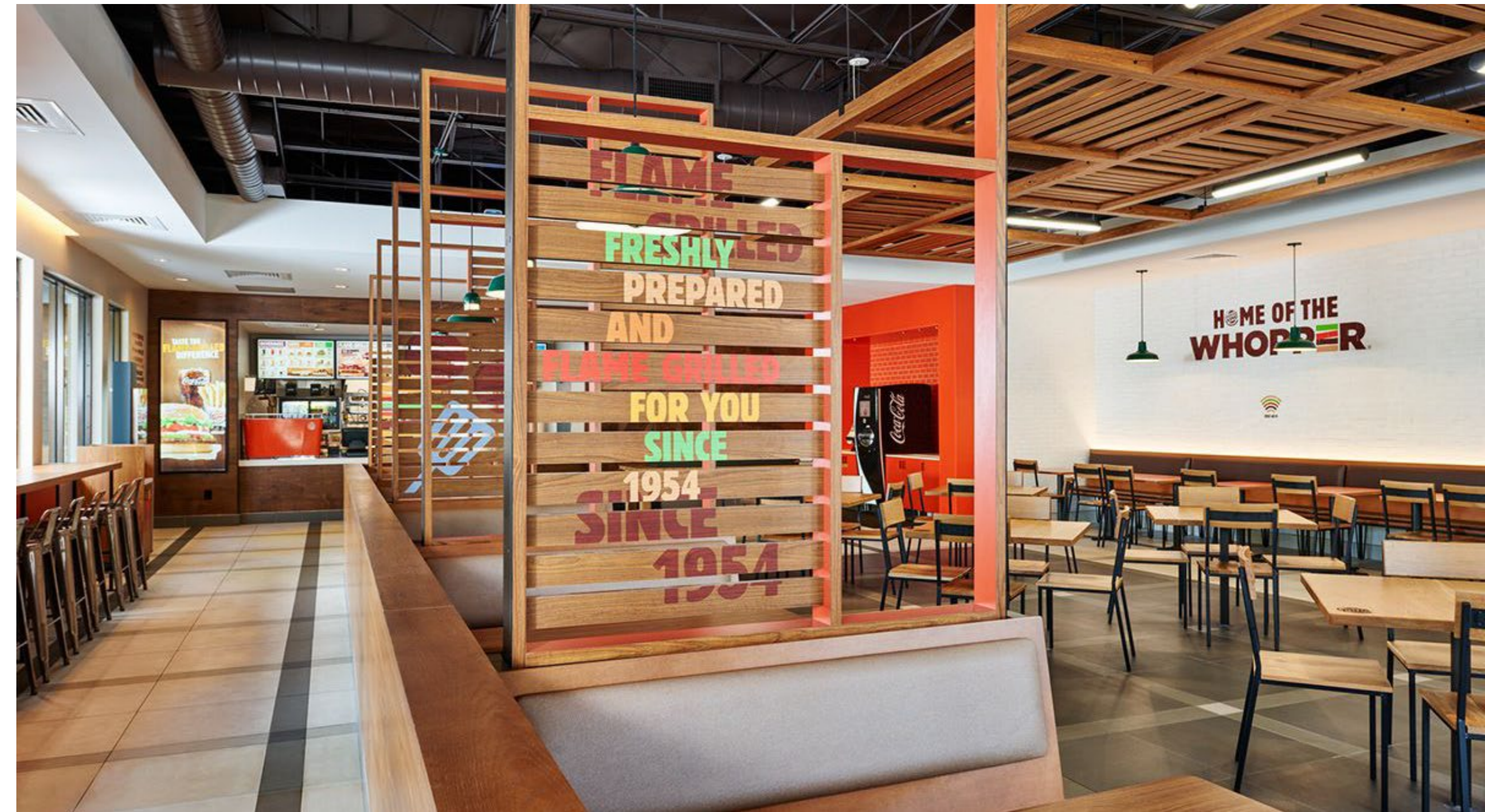


QUICK SERVICE RESTAURANT

Burger King

► Project Information

- Ground-Up New Construction and Tenant Improvement Work
- Multiple Locations in the Chicagoland area
- Architect – Warren Johnson Architects

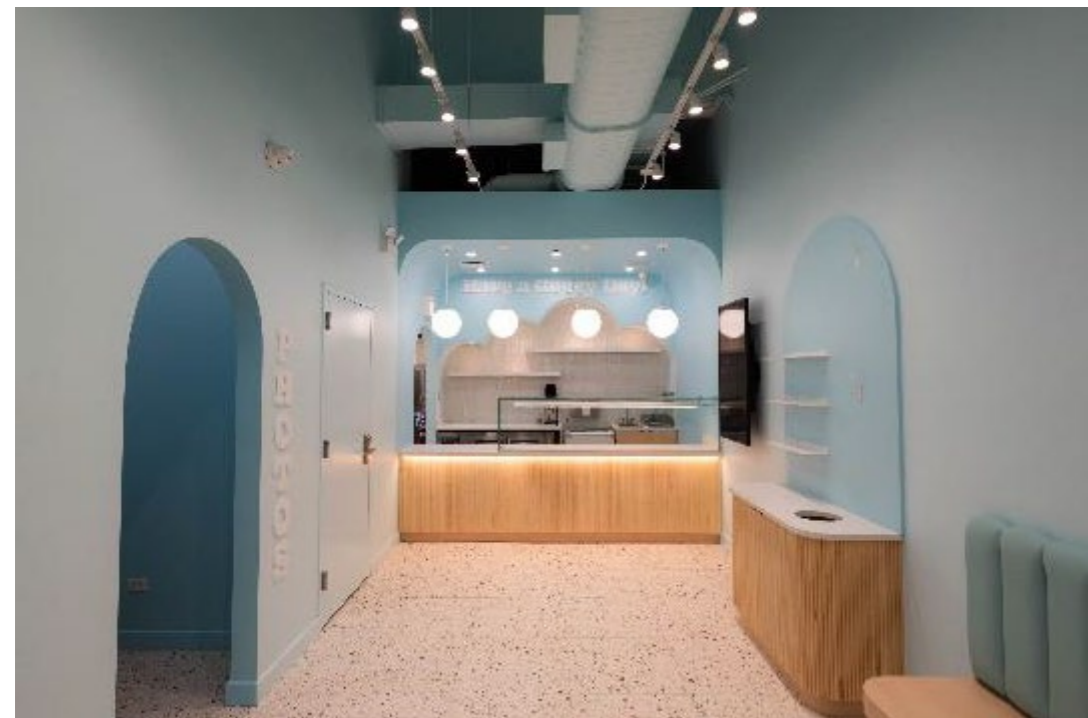


QUICK SERVICE RESTAURANT

Chip City

► Project Information

- Buildout and Tenant Improvement Work
- Multiple Locations in the Chicagoland area
- Architect – Warren Johnson Architects

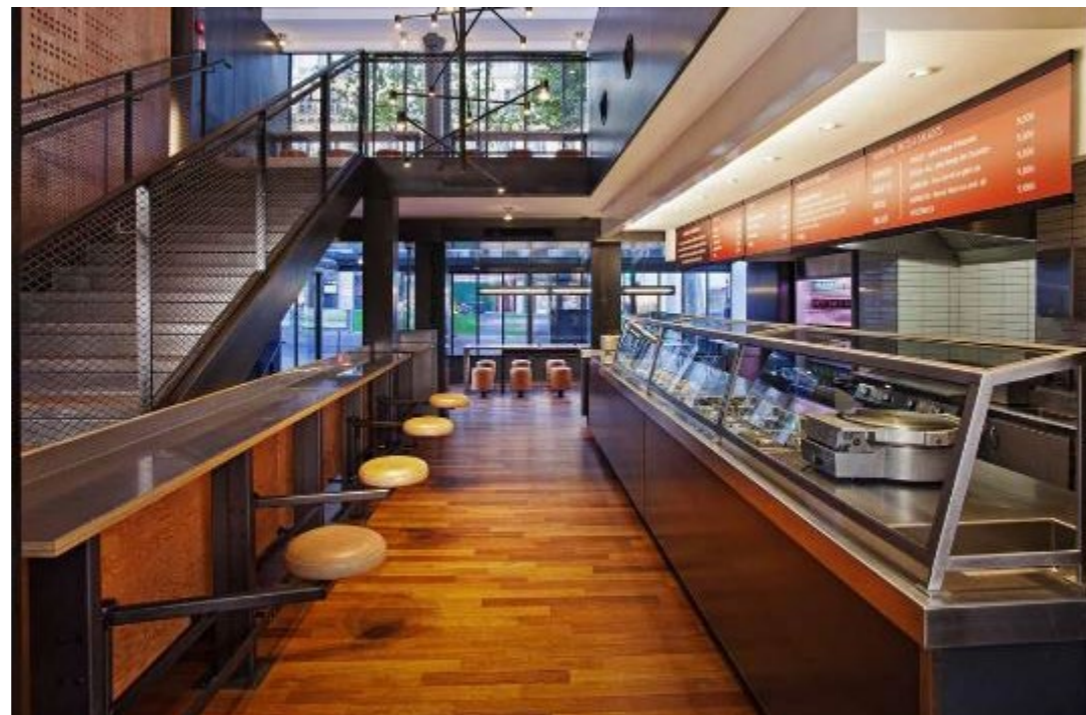
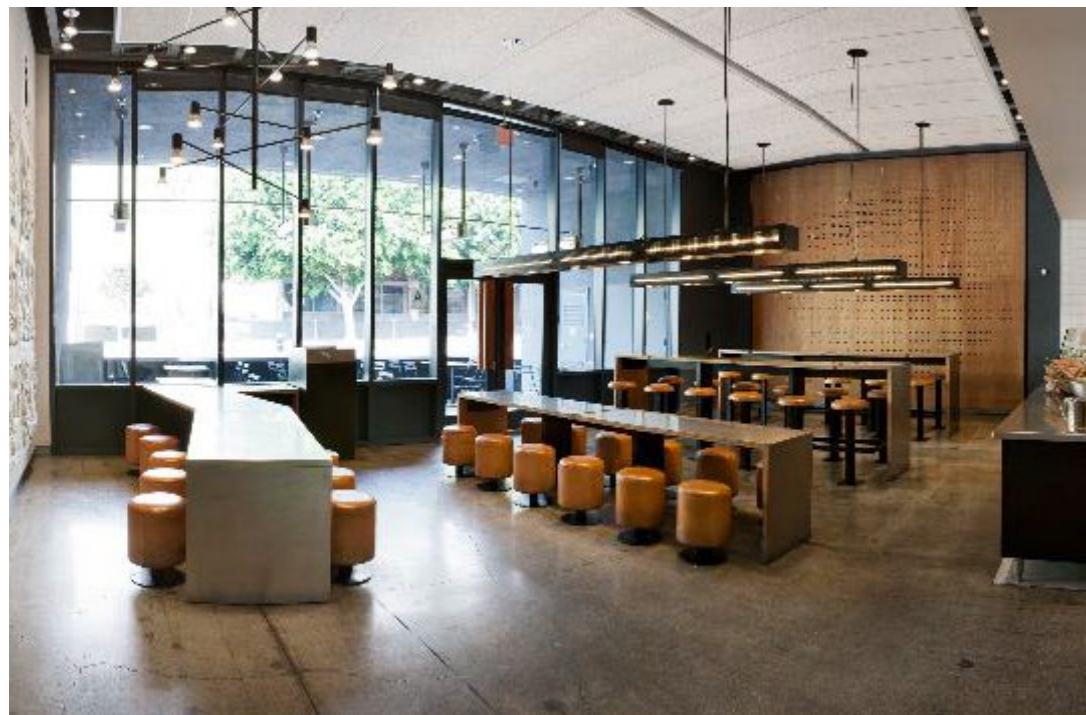


QUICK SERVICE RESTAURANT

Chipotle

► Project Information

- Ground-Up New Construction and Tenant Improvement Work
- Multiple Locations in the Chicagoland area
- Architect – Red Architecture & Planning



QUICK SERVICE RESTAURANT

Dunkin' Donuts

► Project Information

- Ground-Up New Construction and Tenant Improvement Work
- Multiple Locations in the Chicagoland area
- Architects – Kolbrook Design, Inc.



QUICK SERVICE RESTAURANT

Einstein Bros. Bagels

► Project Information

- Remodel and Ground-Up New Construction
- Multiple Locations throughout U.S.
- Architect – URS Corporation



QUICK SERVICE RESTAURANT

Krispy Kreme

► Project Information

- Ground-Up New Construction
- Multiple Locations in the Chicagoland area
- Architect – National Restaurant Designs



QUICK SERVICE RESTAURANT

McDonald's

► Project Information

- Ground-Up New Construction and Tenant Improvement Work
- Multiple Locations in the Chicagoland area
- Architect – Lingle Design Group



QUICK SERVICE RESTAURANT

Sonic Drive-In

► Project Information

- Ground-Up New Construction and Tenant Improvement Work
- Multiple Locations in the Chicagoland area
- Architect – Warren Johnson



QUICK SERVICE RESTAURANT

Starbucks

► Project Information

- Ground-Up New Construction and Tenant Improvement Work
- Multiple Locations in the Chicagoland area
- Architects - NORR Architects



QUICK SERVICE RESTAURANT

Wendy's

► Project Information

- Ground-Up New Construction and Tenant Improvement Work
- Multiple Locations in the Chicagoland area
- Architect - Wallin Gomez Architects



CONTACT US

Office Address

3401 N California Avenue
Chicago, IL 60618

Phone

(773) 665-9252

Email

info@macongroup.com

